

S1-1 Silver Wokingham Stakes (Handicap) - Racing Colours



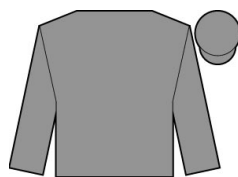
APLOMB



BERNARDO O'REILLY



BLUE MIST



BURMESE WALTZ



CHIEFOFCHIEFS



COSMIC LAW



COUNT D'ORSAY



DIRTY RASCAL



EMBOUR



FLAVIUS TITUS



GABRIAL THE WIRE



GOLDEN APOLLO



GUNMETAL



HYPERFOCUS



LOUIE DE PALMA



MAGICAL WISH



NAHAARR



OPEN WIDE



PASS THE VINO



SIR MAXIMILIAN



SWINDLER



TOTAL COMMITMENT



VINTAGE BRUT



WOVEN